

KOMATSU

PC210LC-11/PC240LC-11/PC290LC-11 PC360LC-11/PC390LC-11/PC490LC-11

super long front — hydraulic excavator attachments



Front lengths

50' - 65' 15.2 - 19.8 m

Super long front



Super long front attachments — hydraulic excavator attachments

PC210LC-11	PC360LC-11
PC240LC-11	PC390LC-11
PC290LC-11	PC490LC-11

Photos may include optional equipment

Komatsu super long front arrangements are designed and built from the frame up to handle heavy duty production demands. This arrangement includes the base machine with additional factory installed counterweight and frame reinforcement package, optimized hydraulics and a long reach front designed to work with each specific Komatsu model manufactured by Young Corporation. This provides the best combination of machine balance, speed and durability maximizing, productivity and reliability.

For use in:

Industrial

- Waste pond and pit rehabilitation in industrial plants
- Settling pond rehabilitation in mills and plants

Governmental

- River and creek bank maintenance and stabilization
- Dredging of waterways
- Highway landscaping and sloping
- Irrigation and drainage ditch maintenance

Construction

- Dredging of bridge foundations
- Cofferdam construction
- Slurry wall construction in light soils

Mining

- Waterway maintenance
- Slurry and settling pond maintenance

Arrangement features

- Extends operating range and utility of the excavator
- Designed for long-life operation and performance
- Arm tucks under boom for lowest possible transport height without disassembly
- Large selection of ditch-cleaning and general purpose buckets
- Functions and operations are identical to a standard excavator
- Komatsu-designed and engineered base unit using all Komatsu components

Boom and stick features

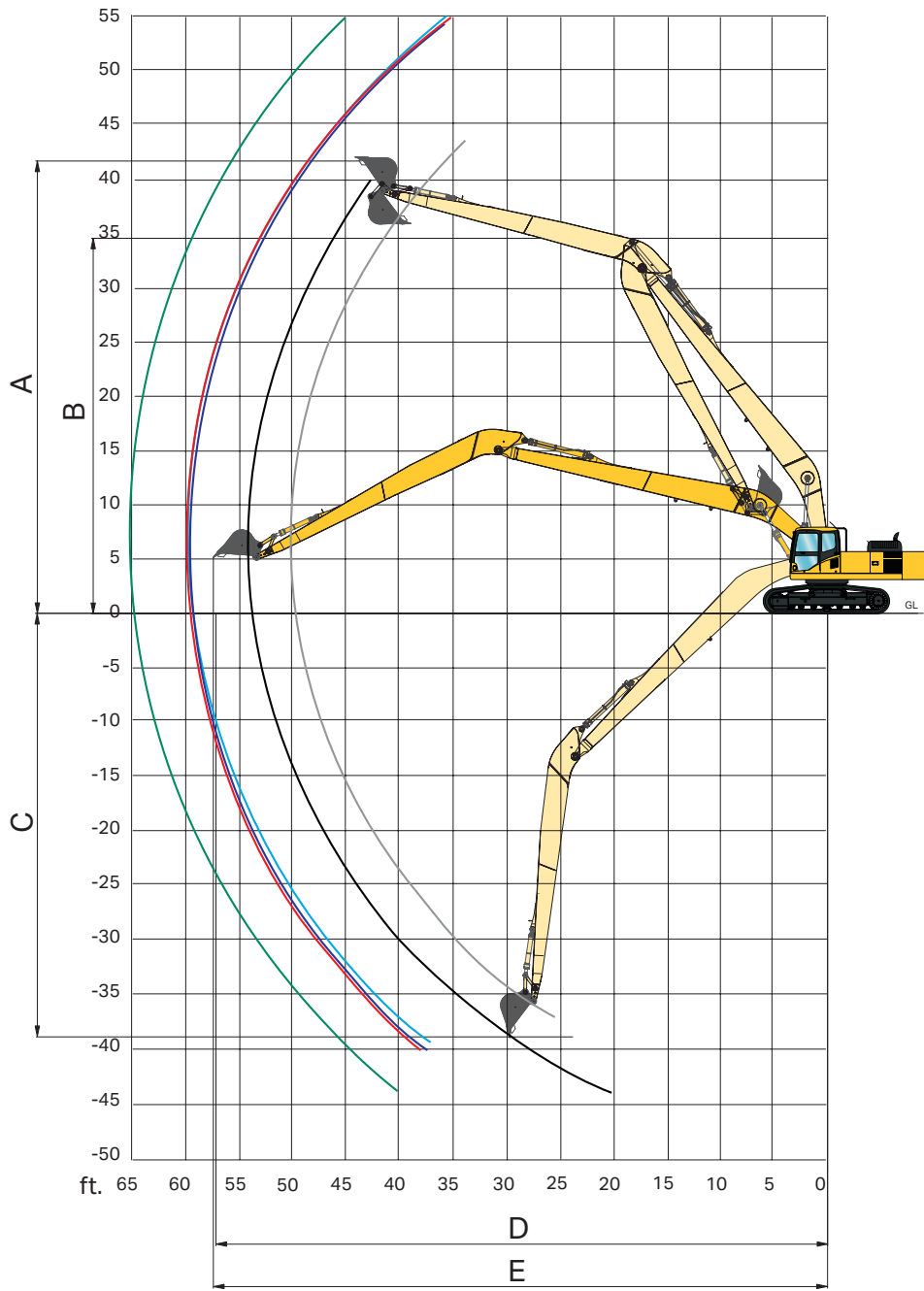
- Unique baffling for strength
- Stress relieved fabrications
- Hardened steel, nickel plated pins for corrosion and wear resistance
- Cast power link for increased durability
- Sealed hardened bushing for long life
- Hardened stick tip for reduced wear



KOMTRAX

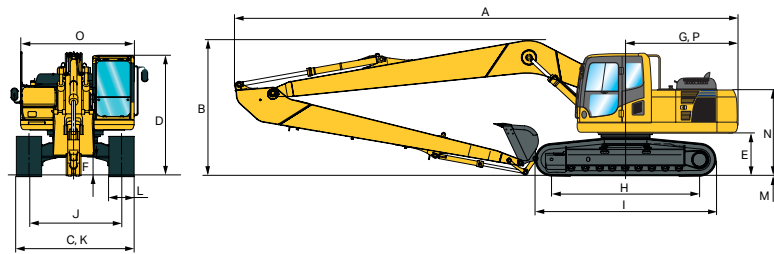
Komtrax-equipped machines can send location, SMR and operation maps to a secure website utilizing wireless technology. Machines also relay error codes, cautions, maintenance items, fuel levels and much more.

Super long front



Working ranges

Arm	PC210LC-11	PC240LC-11	PC240LC-11	PC290LC-11	PC360LC-11	PC390LC-11	PC490LC-11
A Max. digging height	13,564 mm 44'6"	13,106 mm 43'0"	17,247 mm 56'7"	16,891 mm 55'5"	16,383 mm 53'9"	16,586 mm 54'5"	16,662 mm 54'8"
B Max. dumping height	11,836 mm 38'10"	11,430 mm 37'6"	15,545 mm 51'0"	15,088 mm 49'6"	14,173 mm 46'6"	14,376 mm 47'2"	14,148 mm 46'5"
C Max. digging depth	11,506 mm 37'9"	13,411 mm 44'0"	13,005 mm 42'8"	12,624 mm 41'5"	12,446 mm 40'10"	12,268 mm 40'3"	14,072 mm 46'2"
D Max. digging reach at ground level	15,138 mm 49'8"	16,586 mm 54'5"	18,212 mm 59'9"	18,186 mm 59'8"	18,110 mm 59'5"	18,110 mm 59'5"	19,761 mm 64'10"
E Max. digging reach	15,240 mm 50'0"	16,764 mm 55'0"	18,364 mm 60'3"	18,288 mm 60'0"	18,288 mm 60'0"	18,288 mm 60'0"	19,812 mm 65'0"



Transportation dimensions

	PC210LC-11	PC240LC-11	PC290LC-11	PC360LC-11	PC390LC-11	PC490LC-11 F/G	PC490LC-11 V/G
Front length	15,240 mm 50'	16,764 mm 55'	18,288 mm 60'	18,288 mm 60'	18,288 mm 60'	19,812 mm 65'	19,812 mm 65'
A Overall length*	12,370 mm 40'7"	13,395 mm 43'11"	14,500 mm 47'7"	14,910 mm 48'11"	14,880 mm 48'10"	16,130 mm 52'11"	16,130 mm 52'11"
B Transport height (to top of boom)**	3,175 mm 10'5"	3,200 mm 10'6"	3,429 mm 11'3"	3,353 mm 11'0"	3,327 mm 10'11"	3,556 mm 11'8"	3,556 mm 11'8"
C Overall width	3,180 mm 10'5"	3,380 mm 11'1"	3,390 mm 11'2"	3,440 mm 11'4"	3,640 mm 11'11"	3,640 mm 11'11"	3,790 mm 12'5"
D Overall height (to top of cab)	3,040 mm 10'0"	3,055 mm 10'0"	3,175 mm 10'5"	3,160 mm 10'4"	3,262 mm 10'8"	3,360 mm 11'0"	3,360 mm 11'0"
E Ground clearance (counterweight)	1,085 mm 3'7"	1,100 mm 3'7"	1,215 mm 4'0"	1,185 mm 3'11"	1,320 mm 4'4"	1,385 mm 4'7"	1,385 mm 4'7"
F Ground clearance (minimum)	440 mm 1'5"	440 mm 1'5"	495 mm 1'7"	500 mm 1'8"	550 mm 1'10"	568 mm 1'10"	568 mm 1'10"
G Tail swing radius	3,020 mm 9'11"	3,020 mm 9'11"	3,020 mm 9'11"	3,450 mm 11'4"	3,450 mm 11'4"	3,645 mm 12'0"	3,645 mm 12'0"
H Track length on ground	3,655 mm 12'0"	3,845 mm 12'7"	4,030 mm 13'3"	4,030 mm 13'3"	4,350 mm 14'3"	4,350 mm 14'3"	4,350 mm 14'3"
I Track length	4,450 mm 14'7"	4,640 mm 15'3"	4,955 mm 16'3"	4,955 mm 16'3"	5,355 mm 17'7"	5,385 mm 17'8"	5,385 mm 17'8"
J Track gauge	2,380 mm 7'10"	2,580 mm 8'6"	2,590 mm 8'6"	2,590 mm 8'6"	2,740 mm 9'0"	2,740 mm 9'0"	2,885 mm 9'6"
K Width of crawler	3,080 mm 10'5"	3,380 mm 11'1"	3,390 mm 11'2"	3,440 mm 11'4"	3,640 mm 11'11"	3,640 mm 11'11"	3,785 mm 12'5"
L Shoe width	800 mm 31.5"	800 mm 31.5"	800 mm 31.5"	850 mm 33.5"	900 mm 35.5"	900 mm 35.5"	900 mm 35.5"
M Grouser height	25 mm 1.0"	25 mm 1.0"	36 mm 1.4"	36 mm 1.4"	37 mm 1.5"	37 mm 1.5"	37 mm 1.5"
N Machine height to top of counterweight	2,265 mm 7'5"	2,265 mm 7'5"	2,380 mm 7'10"	2,356 mm 7'9"	2,491 mm 8'2"	2,725 mm 8'11"	2,725 mm 8'11"
O Machine upper width	2,850 mm 9'4"	2,850 mm 9'4"	2,850 mm 9'4"	3,145 mm 10'4"	3,145 mm 10'4"	3,145 mm 10'4"	3,145 mm 10'4"
P Distance, swing center to rear end	2,990 mm 9'10"	2,990 mm 9'10"	2,985 mm 9'10"	3,405 mm 11'2"	3,405 mm 11'2"	3,605 mm 11'10"	3,605 mm 11'10"

*60' A 47'7" **60' B 11'0"

Recommended buckets

Model	Bucket			
	Standard width	Bucket volume	Bucket weight	Bucket pin class
PC210LC-11	1,220 mm 48"	0.46 m ³ 0.6 yd ³	288 kg 635 lbs.	PC138
PC240LC-11	1,524 mm 60"	0.57 m ³ 0.75 yd ³	324 kg 714 lbs.	PC138
PC290LC-11	1,524 mm 60"	0.57 m ³ 0.75 yd ³	324 kg 714 lbs.	PC138
PC360LC-11	1,524 mm 60"	0.96 m ³ 1.25 yd ³	618 kg 1,363 lbs.	PC200
PC390LC-11	1,524 mm 60"	0.96 m ³ 1.25 yd ³	618 kg 1,363 lbs.	PC200
PC490LC-11	1,524 mm 60"	0.96 m ³ 1.25 yd ³	618 kg 1,363 lbs.	PC200

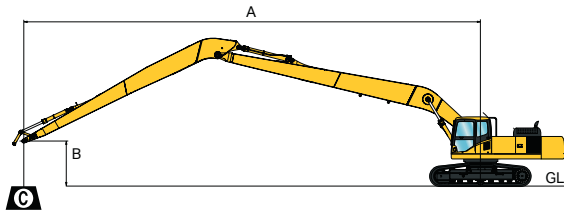
Shipping weight (approximate)

Model	Front length	Boom weight	Arm weight
PC210LC-11	15,240 mm 50'	2,926 kg 6,451 lbs.	1,570 kg 3,461 lbs.
PC240LC-11	16,764 mm 55'	3,075 kg 6,779 lbs.	1,622 kg 3,575 lbs.
PC240LC-11	18,288 mm 60'	2,614 kg 5,762 lbs.	1,491 kg 3,288 lbs.
PC290LC-11	18,288 mm 60'	3,345 kg 7,374 lbs.	1,688 kg 3,722 lbs.
PC360LC-11	18,288 mm 60'	4,546 kg 10,021 lbs.	2,423 kg 5,342 lbs.
PC390LC-11	18,288 mm 60'	4,546 kg 10,021 lbs.	2,423 kg 5,342 lbs.
PC490LC-11	19,812 mm 65'	5,795 kg 12,776 lbs.	3,001 kg 6,617 lbs.

Operating weight (approximate) (less bucket)

Model	Shoe	Operating weight
PC210LC-11	700 mm 28"	24,961 kg 55,029 lbs.
	800 mm 31.5"	25,241 kg 55,646 lbs.
PC240LC-11	700 mm 28"	26,589 kg 58,618 lbs.
	800 mm 31.5"	26,869 kg 59,235 lbs.
PC240LC-11	700 mm 28"	25,965 kg 57,244 lbs.
	800 mm 31.5"	26,245 kg 57,861 lbs.
PC290LC-11	700 mm 28"	32,538 kg 71,733 lbs.
	800 mm 31.5"	32,918 kg 72,571 lbs.
	850 mm 33.5"	33,168 kg 73,122 lbs.
PC360LC-11	700 mm 28"	36,407 kg 80,263 lbs.
	800 mm 31.5"	36,787 kg 81,101 lbs.
	850 mm 33.5"	37,166 kg 81,938 lbs.
PC390LC-11	700 mm 28"	40,797 kg 89,941 lbs.
	800 mm 31.5"	41,300 kg 91,050 lbs.
	900 mm 35.5"	41,737 kg 92,014 lbs.
PC490LC-11	700 mm 28"	52,354 kg 115,420 lbs.
	Fixed Gauge 800 mm 31.5"	52,853 kg 116,520 lbs.
	65' 900 mm 35.5"	53,343 kg 117,600 lbs.
PC490LC-11	700 mm 28"	53,429 kg 117,790 lbs.
	Variable Gauge 800 mm 31.5"	53,928 kg 118,890 lbs.
65' 900 mm 35.5"	54,418 kg 119,970 lbs.	

Super long front



- A: Reach from swing center
- B: Bucket hook height
- C: Lifting capacity
- Cf: Rating over front
- Cs: Rating over side

- Conditions:
- Shoe: 700 mm 28"
 - Bucket: none
 - Counterweight: 9,634 lbs. (4,370 kg)

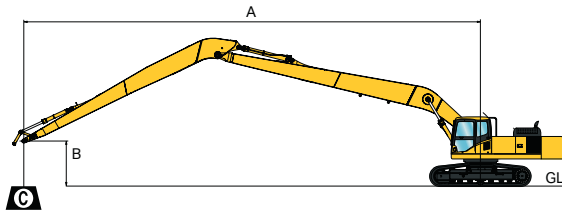
PC210LC-11 lifting capacity (front: 15.24 m 50')

Unit: kg lbs.

B	A		10		15		20		25		30		35		40		45		
	Cf	Cs	Cf	Cs	Cf	Cs	Cf	Cs	Cf	Cs	Cf	Cs	Cf	Cs	Cf	Cs	Cf	Cs	
35 ft.													*4,400	*4,400					
10.7 m													*1,996	*1,996					
30 ft.													*5,200	*5,200	*3,000	*3,000			
9.1 m													*2,359	*2,359	*1,361	*1,361			
25 ft.													*5,400	*5,400	*5,300	4,100			
7.6 m													*2,449	*2,449	*2,404	1,860			
20 ft.												*5,900	*5,900	*5,700	5,200	*5,600	3,900		
6.1 m												*2,676	*2,676	*2,585	2,359	*2,540	1,769		
15 ft.									*7,300	*7,300	*6,600	6,600	*6,200	4,900	*5,900	3,700	*4,000	2,800	
4.6 m									*3,311	*3,311	*2,994	2,994	*2,812	2,223	*2,676	1,678	*1,814	1,270	
10 ft.	*19,300	*19,300	*13,900	*13,900	*10,400	*10,400	*8,600	8,100	*7,500	6,000	*6,800	4,600	5,700	3,500	4,500	2,700			
3.0 m	*8,754	*8,754	*6,305	*6,305	*4,717	*4,717	*3,901	3,674	*3,402	2,722	*3,084	2,087	2,585	1,588	2,041	1,225			
5 ft.	*4,600	*5,600	*18,000	*14,500	*12,700	9,900	*10,000	7,200	*8,400	5,400	6,800	4,200	5,400	3,200	4,400	2,500			
1.5 m	*2,087	*2,540	*8,165	*6,577	*5,761	4,491	*4,536	3,266	*3,810	2,449	3,084	1,905	2,449	1,451	1,996	1,134			
0 ft.	*5,400	*5,400	*12,500	*12,500	*14,500	8,700	10,600	6,400	8,100	4,900	6,400	3,800	5,200	3,000	4,200	2,400			
0 m	*2,449	*2,449	*5,670	*5,670	*6,577	3,946	4,808	2,903	3,674	2,223	2,903	1,724	2,359	1,361	1,905	1,089			
-5 ft.	*6,700	*6,700	*11,600	*11,600	13,800	7,900	10,000	5,900	7,700	4,500	6,100	3,600	5,000	2,800	4,100	2,300			
-1.5 m	*3,039	*3,039	*5,262	*5,262	6,260	3,583	4,536	2,676	3,493	2,041	2,767	1,633	2,268	1,270	1,860	1,043			
-10 ft.	*8,300	*8,300	*12,500	11,400	13,300	7,500	9,600	5,500	7,400	4,300	5,900	3,400	4,900	2,700					
-3.0 m	*3,765	*3,765	*5,670	5,171	6,033	3,402	4,354	2,495	3,357	1,950	2,676	1,542	2,223	1,225					
-15 ft.	*10,100	*10,100	*14,200	11,400	13,200	7,400	9,400	5,400	7,300	4,100	5,800	3,300	4,800	2,700					
-4.6 m	*4,581	*4,581	*6,441	5,171	5,987	3,357	4,264	2,449	3,311	1,860	2,631	1,497	2,177	1,225					
-20 ft.	*12,100	*12,100	*16,600	11,600	13,300	7,500	9,500	5,400	7,300	4,100	5,900	3,300							
-6.1 m	*5,488	*5,488	*7,530	5,262	6,033	3,402	4,309	2,449	3,311	1,860	2,676	1,497							
-25 ft.	*14,500	*14,500	*19,600	12,200	13,600	7,800	9,700	5,600	7,500	4,300									
-7.6 m	*6,577	*6,577	*8,890	5,534	6,169	3,538	4,400	2,540	3,402	1,950									
-30 ft.	*17,200	*17,200	*16,800	12,900	*13,100	8,300	10,100	6,000											
-9.1 m	*7,802	*7,802	*7,620	5,851	*5,942	3,765	4,581	2,722											

*Asterisk indicates load is limited by hydraulic capacity rather than tipping. Ratings are based on ISO standard No. 10567. Rated load capacity does not exceed 87% of hydraulic lift capacity or 75% of tipping load. Total weight of bucket and/or installed attachments must be deducted from the capacities shown above. Lift capacity chart is based on machine located on a solid, level and uniform surface. Load ratings are at the arm bucket pin location, use of any attachment point is a different location to handle objects could affect excavator lift performance.

General specifications



A: Reach from swing center
 B: Bucket hook height
 C: Lifting capacity
 Cf: Rating over front
 Cs: Rating over side

Conditions:
 • Shoe: 700 mm 28"
 • Bucket: none
 • Counterweight: 12,125 lbs. (5,500 kg)

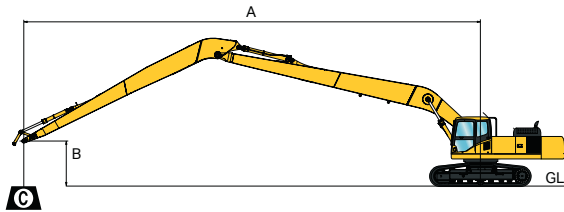
PC240LC-11 lifting capacity (front: 16.76 m 55')

Unit: kg lbs.

B \ A	10		15		20		25		30		35		40		45		50				
	Cf	Cs	Cf	Cs	Cf	Cs	Cf	Cs	Cf	Cs	Cf	Cs	Cf	Cs	Cf	Cs	Cf	Cs			
35 ft.														*4,500	*4,500						
10.7 m														*2,041	*2,041						
30 ft.														*4,900	*4,900	*3,200	*3,200				
9.1 m														*2,223	*2,223	*1,451	*1,451				
25 ft.														*5,100	*5,100	*4,800	4,000				
7.6 m														*2,313	*2,313	*2,177	1,814				
20 ft.														*5,400	5,000	*5,300	3,900				
6.1 m														*2,449	2,268	*2,404	1,769				
15 ft.														*6,100	*6,100	*5,800	4,800	*5,600	3,700	*3,400	2,900
4.6 m														*2,767	*2,767	*2,631	2,177	*2,540	1,678	*1,542	1,315
10 ft.	*10,800	*10,800							*8,800	*8,800	*7,600	7,400	*6,800	5,700	*6,300	4,400	5,700	3,500	*4,200	2,700	
3.0 m	*4,899	*4,899							*3,992	*3,992	*3,447	3,357	*3,084	2,585	*2,858	1,996	2,585	1,588	*1,905	1,225	
5 ft.	*3,700	*3,700	*13,400	*13,400	*13,300	11,900	*10,300	8,700	*8,600	6,700	*7,500	5,200	6,600	4,100	5,400	3,300	4,500	2,600			
1.5 m	*1,678	*1,678	*6,078	*6,078	*6,033	5,398	*4,672	3,946	*3,901	3,039	*3,402	2,359	2,994	1,860	2,449	1,497	2,041	1,179			
0 ft.	*3,900	*3,900	*8,900	*8,900	*15,300	10,500	*11,700	7,800	*9,600	6,100	7,800	4,800	6,300	3,800	5,200	3,100	4,400	2,500			
0 m	*1,769	*1,769	*4,037	*4,037	*6,940	4,763	*5,307	3,538	*4,354	2,767	3,538	2,177	2,858	1,724	2,359	1,406	1,996	1,134			
-5 ft.	*5,000	*5,000	*8,600	*8,600	*16,500	9,600	12,000	7,200	9,300	5,600	7,400	4,500	6,100	3,600	5,100	2,900	*3,600	2,400			
-1.5 m	*2,268	*2,268	*3,901	*3,901	*7,484	4,354	5,443	3,266	4,218	2,540	3,357	2,041	2,767	1,633	2,313	1,315	*1,633	1,089			
-10 ft.	*6,300	*6,300	*9,500	*9,400	*16,000	9,200	11,500	6,800	8,900	5,300	7,200	4,200	5,900	3,400	5,000	2,800					
-3.0 m	*2,858	*2,858	*4,309	*4,264	*7,257	4,173	5,216	3,084	4,037	2,404	3,266	1,905	2,676	1,542	2,268	1,270					
-15 ft.	*7,800	*7,800	*10,700	*10,700	*15,800	9,000	11,300	6,600	8,700	5,100	7,000	4,100	5,800	3,300	4,900	2,800					
-4.6 m	*3,538	*3,538	*4,853	*4,853	*7,167	4,082	5,126	2,994	3,946	2,313	3,175	1,860	2,631	1,497	2,223	1,270					
-20 ft.	*9,500	*9,500	*12,500	*12,500	*15,800	9,000	11,300	6,500	8,700	5,000	7,000	4,000	5,800	3,300							
-6.1 m	*4,309	*4,309	*5,670	*5,670	*7,167	4,082	5,126	2,948	3,946	2,268	3,175	1,814	2,631	1,497							
-25 ft.	*11,300	*11,300	*14,800	*14,500	*16,100	9,300	11,400	6,700	8,800	5,100	7,100	4,100	5,900	3,500							
-7.6 m	*5,126	*5,126	*6,713	*6,577	*7,303	4,218	5,171	3,039	3,992	2,313	3,220	1,860	2,676	1,588							
-30 ft.	*13,500	*13,500	*17,700	*15,200	*15,600	9,700	11,800	7,000	9,000	5,400	7,400	4,400									
-9.1 m	*6,123	*6,123	*8,029	*6,895	*7,076	4,400	5,352	3,175	4,082	2,449	3,357	1,996									
-35 ft.	*16,000	*16,000	*17,200	*16,100	*13,400	10,300	*10,700	7,500	*8,500	5,900											
-10.7 m	*7,257	*7,257	*7,802	*7,303	*6,078	4,672	*4,853	3,402	*3,856	2,676											
-40 ft.			*12,300	*12,300	*9,500	*9,500															
-12.2 m			*5,579	*5,579	*4,309	*4,309															

*Asterisk indicates load is limited by hydraulic capacity rather than tipping. Ratings are based on ISO standard No. 10567. Rated load capacity does not exceed 87% of hydraulic lift capacity or 75% of tipping load. Total weight of bucket and/or installed attachments must be deducted from the capacities shown above. Lift capacity chart is based on machine located on a solid, level and uniform surface. Load ratings are at the arm bucket pin location, use of any attachment point is a different location to handle objects could affect excavator lift performance.

Super long front



- A: Reach from swing center
- B: Bucket hook height
- C: Lifting capacity
- Cf: Rating over front
- Cs: Rating over side

- Conditions:
- Shoe: 700 mm 28"
 - Bucket: none
 - Counterweight: 12,125 lbs. (5,500 kg)

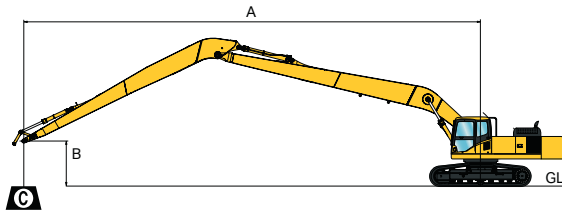
PC240LC-11 lifting capacity (front: 18.3 m 60')

Unit: kg lbs.

A \ B	10		15		20		25		30		35		40		45		50		55				
	Cf	Cs	Cf	Cs	Cf	Cs	Cf	Cs	Cf	Cs	Cf	Cs	Cf	Cs	Cf	Cs	Cf	Cs	Cf	Cs			
50 ft.											3,800	3,800											
15.2 m											1,724	1,724											
45 ft.														*3,700	*3,700								
13.7 m														*1,678	*1,678								
40 ft.														*4,800	*4,800	*3,200	*3,200						
12.2 m														*2,177	*2,177	*1,451	*1,451						
35 ft.														*4,800	*4,800	*4,600	4,400						
10.7 m														*2,177	*2,177	*2,087	1,996						
30 ft.												*4,900	*4,900	*4,900	*4,900	*4,900	4,300	*3,700	3,400				
9.1 m												*2,223	*2,223	*2,223	*2,223	*2,223	1,950	*1,678	1,542				
25 ft.												*5,300	*5,300	*5,200	*5,200	*5,000	4,200	*4,800	3,300				
7.6 m												*2,404	*2,404	*2,359	*2,359	*2,268	1,905	*2,177	1,497				
20 ft.												*6,200	*6,200	*5,800	*5,800	*5,500	5,100	*5,300	4,000	5,100	3,200	*2,800	2,500
6.1 m												*2,812	*2,812	*2,631	*2,631	*2,495	2,313	*2,404	1,814	2,313	1,451	*1,270	1,134
15 ft.					*9,500	*9,500	*8,100	*8,100	*7,100	*7,100	*6,500	6,200	*6,000	4,800	*5,600	3,800	4,900	3,100	*3,700	2,400			
4.6 m					*4,309	*4,309	*3,674	*3,674	*3,220	*3,220	*2,948	2,812	*2,722	2,177	*2,540	1,724	2,223	1,406	*1,678	1,089			
10 ft.	*5,500	*5,500	*16,700	*16,700	*12,000	*12,000	*9,600	*9,600	*8,100	7,300	*7,200	5,700	*6,500	4,500	5,700	3,600	4,800	2,900	4,000	2,300			
3.0 m	*2,495	*2,495	*7,575	*7,575	*5,443	*5,443	*4,354	*4,354	*3,674	3,311	*3,266	2,585	*2,948	2,041	2,585	1,633	2,177	1,315	1,814	1,043			
5 ft.	*2,100	*2,100	*8,400	*8,400	*14,400	11,600	*11,100	8,600	*9,100	6,600	*7,800	5,200	6,700	4,200	5,500	3,400	4,600	2,800	4,000	2,200			
1.5 m	*953	*953	*3,810	*3,810	*6,532	5,262	*5,035	3,901	*4,128	2,994	*3,538	2,359	3,039	1,905	2,495	1,542	2,087	1,270	1,814	998			
0 ft.	*2,600	*2,600	*6,100	*6,100	*14,100	10,300	*12,300	7,700	9,700	6,000	7,800	4,800	6,400	3,900	5,300	3,200	4,400	2,600	3,800	2,100			
0 m	*1,179	*1,179	*2,767	*2,767	*6,396	4,672	*5,579	3,493	4,400	2,722	3,538	2,177	2,903	1,769	2,404	1,451	1,996	1,179	1,724	953			
-5 ft.	*3,600	*3,600	*6,100	*6,100	*11,400	9,500	*11,800	7,100	9,200	5,600	7,400	4,500	6,100	3,700	5,100	3,000	4,300	2,500	3,700	2,100			
-1.5 m	*1,633	*1,633	*2,767	*2,767	*5,171	4,309	*5,352	3,220	4,173	2,540	3,357	2,041	2,767	1,678	2,313	1,361	1,950	1,134	1,678	953			
-10 ft.	*4,700	*4,700	*6,800	*6,800	*11,100	9,100	*11,400	6,700	8,800	5,300	7,100	4,200	5,900	3,500	5,000	2,900	4,200	2,400					
-3.0 m	*2,132	*2,132	*3,084	*3,084	*5,035	4,128	*5,171	3,039	3,992	2,404	3,220	1,905	2,676	1,588	2,268	1,315	1,905	1,089					
-15 ft.	*5,900	*5,900	*7,900	*7,900	*11,700	8,900	*11,200	6,500	8,600	5,100	7,000	4,100	5,800	3,400	4,900	2,800	4,200	2,400					
-4.6 m	*2,676	*2,676	*3,583	*3,583	*5,307	4,037	*5,080	2,948	3,901	2,313	3,175	1,860	2,631	1,542	2,223	1,270	1,905	1,089					
-20 ft.	*7,200	*7,200	*9,200	*9,200	*13,000	9,000	*11,200	6,500	8,600	5,000	6,900	4,000	5,700	3,300	4,800	2,800	4,200	2,400					
-6.1 m	*3,266	*3,266	*4,173	*4,173	*5,897	4,082	*5,080	2,948	3,901	2,268	3,130	1,814	2,585	1,497	2,177	1,270	1,905	1,089					
-25 ft.	*8,600	*8,600	*10,800	*10,800	*14,800	9,100	*11,200	6,600	8,600	5,000	6,900	4,000	5,700	3,300	4,900	2,800							
-7.6 m	*3,901	*3,901	*4,899	*4,899	*6,713	4,128	*5,080	2,994	3,901	2,268	3,130	1,814	2,585	1,497	2,223	1,270							
-30 ft.	*10,100	*10,100	*12,700	*12,700	*15,800	9,400	*11,400	6,800	8,800	5,200	7,000	4,200	5,900	3,500									
-9.1 m	*4,581	*4,581	*5,761	*5,761	*7,167	4,264	*5,171	3,084	3,992	2,359	3,175	1,905	2,676	1,588									
-35 ft.			*15,000	*15,000	*14,000	9,900	*11,400	7,100	9,000	5,400	7,300	4,400											
-10.7 m			*6,804	*6,804	*6,350	4,491	*5,171	3,220	4,082	2,449	3,311	1,996											
-40 ft.							*9,300	7,600	*7,600	5,900													
-12.2 m							*4,218	3,447	*3,447	2,676													

*Asterisk indicates load is limited by hydraulic capacity rather than tipping. Ratings are based on ISO standard No. 10567. Rated load capacity does not exceed 87% of hydraulic lift capacity or 75% of tipping load. Total weight of bucket and/or installed attachments must be deducted from the capacities shown above. Lift capacity chart is based on machine located on a solid, level and uniform surface. Load ratings are at the arm bucket pin location, use of any attachment point is a different location to handle objects could affect excavator lift performance.

General specifications



A: Reach from swing center
 B: Bucket hook height
 C: Lifting capacity
 Cf: Rating over front
 Cs: Rating over side

Conditions:
 • Shoe: 800 mm 31.5"
 • Bucket: none
 • Counterweight: 12,125 lbs. (5,500 kg)

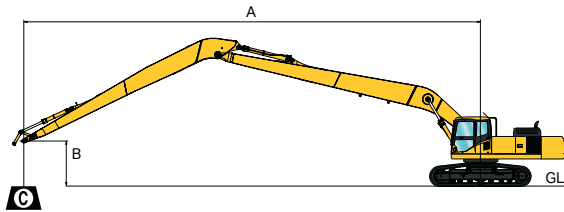
PC290LC-11 lifting capacity (front: 18.3 m 60')

Unit: kg lbs.

A \ B	10		15		20		25		30		35		40		45		50		55		
	Cf	Cs	Cf	Cs	Cf	Cs	Cf	Cs	Cf	Cs	Cf	Cs	Cf	Cs	Cf	Cs	Cf	Cs	Cf	Cs	
45 ft.													*3,600	*3,600							
13.7 m													*1,633	*1,633							
40 ft.													*4,900	*4,900	*3,000	*3,000					
12.2 m													*2,223	*2,223	*1,361	*1,361					
35 ft.													*5,700	*5,700	*4,500	*4,500					
10.7 m													*2,585	*2,585	*2,041	*2,041					
30 ft.													*6,100	*6,100	*5,400	4,900	*3,500	*3,500			
9.1 m													*2,767	*2,767	*2,449	2,223	*1,588	*1,588			
25 ft.												*6,700	*6,700	*6,300	6,100	*6,000	4,700	*4,600	3,700		
7.6 m												*3,039	*3,039	*2,858	2,767	*2,722	2,132	*2,087	1,678		
20 ft.												*7,200	*7,200	*6,600	5,800	*6,200	4,500	*5,400	3,600	*2,600	*2,600
6.1 m												*3,266	*3,266	*2,994	2,631	*2,812	2,041	*2,449	1,633	*1,179	*1,179
15 ft.							*10,100	*10,100	*8,700	*8,700	*7,700	6,900	*7,000	5,400	*6,400	4,300	5,900	3,400	*3,500	2,600	
4.6 m							*4,581	*4,581	*3,946	*3,946	*3,493	3,130	*3,175	2,449	*2,903	1,950	2,676	1,542	*1,588	1,179	
10 ft.	*5,500	*5,500	*19,800	*19,800	*14,300	*14,300	*11,400	10,800	*9,600	8,200	*8,300	6,400	*7,400	5,000	*6,700	4,000	5,700	3,200	*4,100	2,500	
3.0 m	*2,495	*2,495	*8,981	*8,981	*6,486	*6,486	*5,171	4,899	4,354	3,719	*3,765	2,903	*3,357	2,268	*3,039	1,814	2,585	1,451	*1,860	1,134	
5 ft.	*2,100	*2,100	*8,400	*8,400	*16,300	12,900	*12,600	9,600	*10,400	7,400	*8,900	5,800	*7,800	4,600	6,600	3,700	5,600	3,000	*5,500	2,400	
1.5 m	*953	*953	*3,810	*3,810	*7,394	5,851	*5,715	4,354	*4,717	3,357	*4,037	2,631	*3,538	2,087	2,994	1,678	2,540	1,361	*2,495	1,089	
0 ft.	*2,500	*2,500	*6,100	*6,100	*14,200	11,300	*13,600	8,500	*11,100	6,700	*9,400	5,300	*7,700	4,300	6,400	3,500	5,400	2,800	*4,400	2,300	
0 m	*1,134	*1,134	*2,767	*2,767	*6,441	5,126	*6,169	3,856	*5,035	3,039	*4,264	2,404	*3,493	1,950	2,903	1,588	2,449	1,270	*1,996	1,043	
-5 ft.	*3,500	*3,500	*6,000	*6,000	*11,400	10,400	*14,300	7,800	*11,100	6,100	*8,900	4,900	*7,300	4,000	6,100	3,300	5,200	2,700	*4,000	2,200	
-1.5 m	*1,588	*1,588	*2,722	*2,722	*5,171	4,717	*6,486	3,538	*5,035	2,767	*4,037	2,223	*3,311	1,814	2,767	1,497	2,359	1,225	*1,814	998	
-10 ft.	*4,600	*4,600	*6,700	*6,700	*11,100	9,900	*13,800	7,300	*10,700	5,700	*8,600	4,600	*7,100	3,800	6,000	3,100	6,000	2,600			
-3.0 m	*2,087	*2,087	*3,039	*3,039	*5,035	4,491	*6,260	3,311	*4,853	2,585	*3,901	2,087	*3,220	1,724	2,722	1,406	2,722	1,179			
-15 ft.	*5,800	*5,800	*7,800	*7,800	*11,700	9,700	*13,500	7,100	*10,400	5,500	*8,400	4,400	*6,900	3,600	5,900	3,000	5,000	2,500			
-4.6 m	*2,631	*2,631	*3,538	*3,538	*5,307	4,400	*6,123	3,220	*4,717	2,495	*3,810	1,996	*3,130	1,633	2,676	1,361	2,268	1,134			
-20 ft.	*7,100	*7,100	*9,100	*9,100	*13,000	9,700	*13,400	7,000	*10,300	5,400	*8,300	4,300	*6,900	3,500	5,800	3,000	*5,000	2,500			
-6.1 m	*3,220	*3,220	*4,128	*4,128	*5,897	4,400	*6,078	3,175	*4,672	2,449	*3,765	1,950	*3,130	1,588	2,631	1,361	*2,268	1,134			
-25 ft.	*8,500	*8,500	*10,700	*10,700	*14,900	9,900	*13,000	7,100	*10,400	5,400	*8,300	4,300	*6,900	3,600	5,900	3,000					
-7.6 m	*3,856	*3,856	*4,853	*4,853	*6,758	4,491	*5,897	3,220	*4,717	2,449	*3,765	1,950	*3,130	1,633	2,676	1,361					
-30 ft.	*10,100	*10,100	*12,600	*12,600	*14,100	10,300	*11,700	7,300	*9,800	5,600	*8,200	4,500	*6,800	3,700							
-9.1 m	*4,581	*4,581	*5,715	*5,715	*6,396	4,672	*5,307	3,311	*4,445	2,540	*3,719	2,041	*3,084	1,678							
-35 ft.					*11,600	10,800	*9,700	7,700	*8,100	5,900	*6,600	4,800									
-10.7 m					*5,262	4,899	*4,400	3,493	*3,674	2,676	*2,994	2,177									

*Asterisk indicates load is limited by hydraulic capacity rather than tipping. Ratings are based on ISO standard No. 10567. Rated load capacity does not exceed 87% of hydraulic lift capacity or 75% of tipping load. Total weight of bucket and/or installed attachments must be deducted from the capacities shown above. Lift capacity chart is based on machine located on a solid, level and uniform surface. Load ratings are at the arm bucket pin location, use of any attachment point is a different location to handle objects could affect excavator lift performance.

Super long front



- A: Reach from swing center
- B: Bucket hook height
- C: Lifting capacity
- Cf: Rating over front
- Cs: Rating over side

- Conditions:
- Shoe: 850 mm 33.5"
 - Bucket: none
 - Counterweight: 16,314 lbs. (7,400 kg)

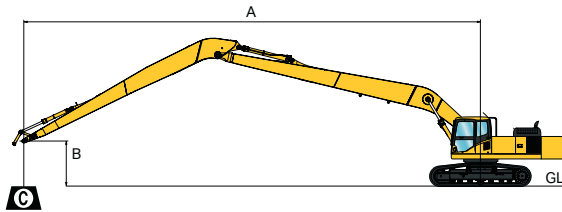
PC360LC-11 lifting capacity (front: 18.3 m 60')

Unit: kg lbs.

A \ B	10		15		20		25		30		35		40		45		50		55		
	Cf	Cs	Cf	Cs	Cf	Cs	Cf	Cs	Cf	Cs	Cf	Cs	Cf	Cs	Cf	Cs	Cf	Cs	Cf	Cs	
45 ft.													*3,000	*3,000							
13.7 m													*1,361	*1,361							
40 ft.													*4,500	*4,500							
12.2 m													*2,041	*2,041							
35 ft.													*5,300	*5,300	*4,000	*4,000					
10.7 m													*2,404	*2,404	*1,814	*1,814					
30 ft.													*5,900	*5,900	*5,000	*5,000	*3,000	*3,000			
9.1 m													*2,676	*2,676	*2,268	*2,268	*1,361	*1,361			
25 ft.												*6,800	*6,800	*6,500	*6,500	*5,700	*5,700	*4,100	*4,100		
7.6 m												*3,084	*3,084	*2,948	*2,948	*2,585	*2,585	*1,860	*1,860		
20 ft.												*7,700	*7,700	*7,300	*7,300	*6,500	6,500	*5,000	*5,000		
6.1 m												*3,493	*3,493	*3,311	*3,311	*2,948	2,948	*2,268	*2,268		
15 ft.									*10,000	*10,000	*9,300	*9,300	*8,500	*8,500	*7,400	7,200	*5,700	*5,700	*3,000	*3,000	
4.6 m									*4,536	*4,536	*4,218	*4,218	*3,856	*3,856	*3,357	3,266	*2,585	*2,585	*1,361	*1,361	
10 ft.	*12,100	*12,100	*23,400	*23,400	*17,200	*17,200	*13,800	*13,800	*11,600	*11,600	*10,100	*10,100	*9,000	8,400	*8,200	6,900	*6,500	5,700	*3,500	*3,500	
3.0 m	*5,488	*5,488	*10,614	*10,614	*7,802	*7,802	*6,260	*6,260	*5,262	*5,262	*4,581	*4,581	*4,082	3,810	*3,719	3,130	*2,948	2,585	*1,588	*1,588	
5 ft.	*3,100	*3,100	*11,700	*11,700	*19,800	*19,800	*15,400	*15,400	*12,700	*12,300	*10,800	9,800	*9,500	8,000	*8,500	6,600	*7,200	3,900	*3,900	*3,900	
1.5 m	*1,406	*1,406	*5,307	*5,307	*8,981	*8,981	*6,985	*6,985	*5,761	*5,579	*4,899	4,445	*4,309	3,629	*3,856	2,994	*3,266	1,769	*1,769	*1,769	
0 ft.	*2,900	*2,900	*7,200	*7,200	*17,800	*17,800	*16,600	*16,600	*13,500	*13,500	*11,400	11,400	*9,900	9,900	*8,800	8,800	*7,800	7,800	*3,900	*3,900	
0 m	*1,315	*1,315	*3,266	*3,266	*8,074	*8,074	*7,530	*7,530	*6,123	*6,123	*5,171	5,171	*4,491	4,491	*3,992	3,992	*3,538	3,538	*1,769	*1,769	
-5 ft.	*3,700	*3,700	*6,700	*6,700	*13,100	*13,100	*17,400	*13,800	*14,100	*10,900	*11,900	8,800	*10,200	7,300	*9,000	6,100	*8,000	5,200	*3,300	*3,300	
-1.5 m	*1,678	*1,678	*3,039	*3,039	*5,942	*5,942	*7,892	*6,260	*6,396	*4,944	*5,398	3,992	*4,627	3,311	*4,082	2,767	*3,629	2,359	*1,497	*1,497	
-10 ft.	*4,800	*4,800	*7,200	*7,200	*12,200	*12,200	*17,800	*13,300	*14,400	*10,500	*12,100	8,500	*10,400	7,100	*9,000	6,000	*7,900	5,100			
-3.0 m	*2,177	*2,177	*3,266	*3,266	*5,534	*5,534	*8,074	*6,033	*6,532	*4,763	*5,488	3,856	*4,717	3,220	*4,082	2,722	*3,583	2,313			
-15 ft.	*5,900	*5,900	*8,200	*8,200	*12,600	*12,600	*17,600	*13,000	*14,400	*10,200	*12,100	8,300	*10,300	6,900	*8,900	5,800	*6,800	5,000			
-4.6 m	*2,676	*2,676	*3,719	*3,719	*5,715	*5,715	*7,983	*5,897	*6,532	*4,627	*5,488	3,765	*4,672	3,130	*4,037	2,631	*3,084	2,268			
-20 ft.	*7,200	*7,200	*9,500	*9,500	*13,800	*13,800	*17,000	*12,900	*14,000	*10,100	*11,700	8,200	*10,000	6,800	*8,500	5,800					
-6.1 m	*3,266	*3,266	*4,309	*4,309	*6,260	*6,260	*7,711	*5,851	*6,350	*4,581	*5,307	3,719	*4,536	3,084	*3,856	2,631					
-25 ft.	*8,600	*8,600	*11,100	*11,100	*15,600	*15,600	*15,800	*12,900	*13,100	*10,100	*11,000	8,200	*9,300	6,800	*7,700	5,900					
-7.6 m	*3,901	*3,901	*5,035	*5,035	*7,076	*7,076	*7,167	*5,851	*5,942	*4,581	*4,989	3,719	*4,218	3,084	*3,493	2,676					
-30 ft.			*13,000	*13,000	*17,000	*17,000	*14,000	*13,200	*11,700	*10,200	*9,700	8,300	*8,000	7,000							
-9.1 m			*5,897	*5,897	*7,711	*7,711	*6,350	*5,987	*5,307	*4,627	*4,400	3,765	*3,629	3,175							
-35 ft.					*13,700	*13,700	*11,500	*11,500	*9,500	*9,500	*7,700	*7,700									
-10.7 m					*6,214	*6,214	*5,216	*5,216	*4,309	*4,309	*3,493	*3,493									

*Asterisk indicates load is limited by hydraulic capacity rather than tipping. Ratings are based on ISO standard No. 10567. Rated load capacity does not exceed 87% of hydraulic lift capacity or 75% of tipping load. Total weight of bucket and/or installed attachments must be deducted from the capacities shown above. Lift capacity chart is based on machine located on a solid, level and uniform surface. Load ratings are at the arm bucket pin location, use of any attachment point is a different location to handle objects could affect excavator lift performance.

General specifications



- A: Reach from swing center
- B: Bucket hook height
- C: Lifting capacity
- Cf: Rating over front
- Cs: Rating over side

- Conditions:
- Shoe: 800 mm 31.5"
 - Bucket: none
 - Counterweight: 16,314 lbs. (7,400 kg)

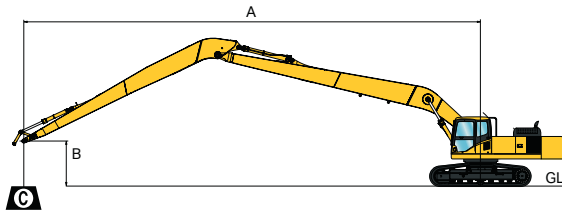
PC390LC-11 lifting capacity (front: 18.3 m 60')

Unit: kg lbs.

A \ B	10		15		20		25		30		35		40		45		50		55		
	Cf	Cs	Cf	Cs	Cf	Cs	Cf	Cs	Cf	Cs	Cf	Cs	Cf	Cs	Cf	Cs	Cf	Cs	Cf	Cs	
50 ft.												*3,700	*3,700								
15.2 m												*1,678	*1,678								
45 ft.														*3,600	*3,600						
13.7 m														*1,633	*1,633						
40 ft.														*5,600	*5,600	*2,900	*2,900				
12.2 m														*2,540	*2,540	*1,315	*1,315				
35 ft.														*6,600	*6,600	*5,000	*5,000				
10.7 m														*2,994	*2,994	*2,268	*2,268				
30 ft.														*7,400	*7,400	*6,200	*6,200	*3,500	*3,500		
9.1 m														*3,357	*3,357	*2,812	*2,812	*1,588	*1,588		
25 ft.														*8,300	*8,300	*7,700	*7,700	*7,200	*7,200	*5,000	*5,000
7.6 m														*3,765	*3,765	*3,493	*3,493	*3,266	*3,266	*2,268	*2,268
20 ft.														*9,800	*9,800	*8,300	*8,800	*8,100	*8,100	*7,500	*7,500
6.1 m														*4,445	*4,445	*3,765	*3,992	*3,674	*3,674	*3,402	3,402
15 ft.														*12,600	*12,600	*10,800	*10,800	*9,500	*9,500	*8,500	*8,500
4.6 m														*5,715	*5,715	*4,899	*4,899	*4,309	*4,309	*3,856	*3,856
10 ft.														*25,000	*25,000	*17,900	*17,900	*14,100	*14,100	*11,800	*11,800
3.0 m														*11,340	*11,340	*8,119	*8,119	*6,396	*6,396	*5,352	*5,352
5 ft.														*10,100	*10,100	*20,200	*20,200	*15,500	*15,500	*12,700	*12,700
1.5 m														*4,581	*4,581	*9,163	*9,163	*7,031	*7,031	*5,761	*5,761
0 ft.	*3,400	*3,400	*7,700	*7,700	*17,800	*17,800	*16,600	15,900	*13,400	12,400	*11,300	10,000	*9,800	8,300	*8,600	6,900	*7,600	5,800	*4,000	*4,000	
0 m	*1,542	*1,542	*3,493	*3,493	*8,074	*8,074	*7,530	7,212	*6,078	5,625	*5,126	4,536	*4,445	3,765	*3,901	3,130	*3,447	2,631	*1,814	*1,814	
-5 ft.	*4,700	*4,700	*7,900	*7,900	*14,800	*14,800	*17,200	15,100	*13,900	11,900	*11,600	9,600	*10,000	8,000	*8,700	6,700	*7,700	5,700			
-1.5 m	*2,132	*2,132	*3,583	*3,583	*6,713	*6,713	*7,802	6,849	*6,305	5,398	*5,262	4,354	*4,536	3,629	*3,946	3,039	*3,493	2,585			
-10 ft.	*6,200	*6,200	*9,000	*9,000	*14,600	*14,600	*17,300	14,600	*14,100	11,500	*11,800	9,300	*10,000	7,700	*8,700	6,500	*7,500	5,600			
-3.0 m	*2,812	*2,812	*4,082	*4,082	*6,622	*6,622	*7,847	6,622	*6,396	5,216	*5,352	4,218	*4,536	3,493	*3,946	2,948	*3,402	2,540			
-15 ft.	*7,800	*7,800	*10,500	*10,500	*15,600	*15,600	*16,900	14,400	*13,900	11,200	*11,600	9,100	*9,900	7,600	*8,500	6,400	*7,100	5,500			
-4.6 m	*3,538	*3,538	*4,763	*4,763	*7,076	*7,076	*7,666	6,532	*6,305	5,080	*5,262	4,128	*4,491	3,447	*3,856	2,903	*3,220	2,495			
-20 ft.	*9,600	*9,600	*12,300	*12,300	*17,500	*17,500	*16,100	14,300	*13,300	11,200	*11,100	9,000	*9,400	7,500	*7,900	6,400					
-6.1 m	*4,354	*4,354	*5,579	*5,579	*7,938	*7,938	*7,303	6,486	*6,033	5,080	*5,035	4,082	*4,264	3,402	*3,583	2,903					
-25 ft.	*11,500	*11,500	*14,500	*14,500	*18,000	*18,000	*14,700	14,500	*12,200	11,200	*10,300	9,100	*8,600	7,600	*6,900	6,500					
-7.6 m	*5,216	*5,216	*6,577	*6,577	*8,165	*8,165	*6,668	6,577	*5,534	5,080	*4,672	4,128	*3,901	3,447	*3,130	2,948					
-30 ft.			*17,100	*17,100	*15,300	*15,300	*12,700	*12,700	*10,600	*10,600	*8,800	*8,800	*7,000	*7,000							
-9.1 m			*7,756	*7,756	*6,940	*6,940	*5,761	*5,761	*4,808	*4,808	*3,992	*3,992	*3,175	*3,175							
-35 ft.							*9,900	*9,900	*8,100	*8,100	*6,400	*6,400									
-10.7 m							*4,491	*4,491	*3,674	*3,674	*2,903	*2,903									

*Asterisk indicates load is limited by hydraulic capacity rather than tipping. Ratings are based on ISO standard No. 10567. Rated load capacity does not exceed 87% of hydraulic lift capacity or 75% of tipping load. Total weight of bucket and/or installed attachments must be deducted from the capacities shown above. Lift capacity chart is based on machine located on a solid, level and uniform surface. Load ratings are at the arm bucket pin location, use of any attachment point is a different location to handle objects could affect excavator lift performance.

Super long front



- A: Reach from swing center
- B: Bucket hook height
- C: Lifting capacity
- Cf: Rating over front
- Cs: Rating over side

- Conditions:
- Shoe: 700 mm 28"
 - Bucket: none
 - Counterweight: 25,353 lbs. (11,500 kg)

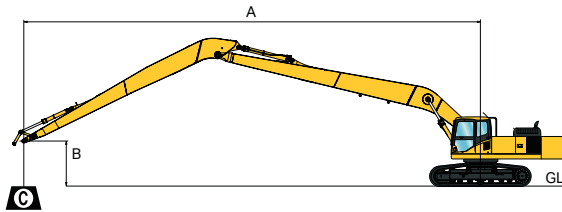
PC490LC-11 lifting capacity (front: 19.8 m 65') fixed gauge

Unit: kg lbs.

A	10		15		20		25		30		35		40		45		50		55		60	
	Cf	Cs	Cf	Cs	Cf	Cs	Cf	Cs	Cf	Cs	Cf	Cs	Cf	Cs	Cf	Cs	Cf	Cs	Cf	Cs	Cf	Cs
45 ft.															*6,600	*6,600						
13.7 m															*2,994	*2,994						
40 ft.															*8,300	*8,300	*5,600	*5,600				
12.2 m															*3,765	*3,765	*2,540	*2,540				
35 ft.															*8,300	*8,300	*7,600	*7,600				
10.7 m															*3,765	*3,765	*3,447	*3,447				
30 ft.															*8,400	*8,400	*7,900	*7,900	*5,800	*5,800		
9.1 m															*3,810	*3,810	*3,583	*3,583	*2,631	*2,631		
25 ft.													*9,500	*9,500	*8,700	*8,700	*8,000	*8,000	*7,400	6,500		
7.6 m												*4,309	*4,309	*3,946	*3,946	*3,629	*3,629	*3,357	2,948			
20 ft.													*9,900	*9,900	*9,000	*9,000	*8,200	7,800	*7,500	6,300		
6.1 m												*4,491	*4,491	*4,082	*4,082	*3,719	3,538	*3,402	2,858			
15 ft.															*13,700	*13,700	*11,800	*11,800	*10,400	*10,400	*9,300	9,200
4.6 m															*6,214	*6,214	*5,352	*5,352	*4,717	*4,717	*4,218	4,173
10 ft.																						
3.0 m																						
5 ft.																						
1.5 m																						
0 ft.																						
0 m																						
-5 ft.																						
-1.5 m																						
-10 ft.																						
-3.0 m																						
-15 ft.																						
-4.6 m																						
-20 ft.																						
-6.1 m																						
-25 ft.																						
-7.6 m																						
-30 ft.																						
-9.1 m																						
-35 ft.																						
-10.7 m																						
-40 ft.																						
-12.2 m																						

*Asterisk indicates load is limited by hydraulic capacity rather than tipping. Ratings are based on ISO standard No. 10567. Rated load capacity does not exceed 87% of hydraulic lift capacity or 75% of tipping load. Total weight of bucket and/or installed attachments must be deducted from the capacities shown above. Lift capacity chart is based on machine located on a solid, level and uniform surface. Load ratings are at the arm bucket pin location, use of any attachment point is a different location to handle objects could affect excavator lift performance.

General specifications



- A: Reach from swing center
- B: Bucket hook height
- C: Lifting capacity
- Cf: Rating over front
- Cs: Rating over side

- Conditions:
- Shoe: 700 mm 28"
 - Bucket: none
 - Counterweight: 25,353 lbs. (11,500 kg)

PC490LC-11 lifting capacity (front: 19.8 m 65') variable gauge

Unit: kg lbs.

B \ A	10		15		20		25		30		35		40		45		50		55		60	
	Cf	Cs	Cf	Cs	Cf	Cs	Cf	Cs	Cf	Cs	Cf	Cs	Cf	Cs	Cf	Cs	Cf	Cs	Cf	Cs	Cf	Cs
45 ft.															*6,600	*6,600						
13.7 m															*2,994	*2,994						
40 ft.															*8,300	*8,300	*5,600	*5,600				
12.2 m															*3,765	*3,765	*2,540	*2,540				
35 ft.															*8,300	*8,300	*7,600	*7,600				
10.7 m															*3,765	*3,765	*3,447	*3,447				
30 ft.															*8,400	*8,400	*7,900	*7,900	*5,800	*5,800		
9.1 m															*3,810	*3,810	*3,583	*3,583	*2,631	*2,631		
25 ft.													*9,500	*9,500	*8,700	*8,700	*8,000	*8,000	*7,400	6,700		
7.6 m													*4,309	*4,309	*3,946	*3,946	*3,629	*3,629	*3,357	3,039		
20 ft.													*9,900	*9,900	*9,000	*9,000	*8,200	8,000	*7,500	6,400		
6.1 m													*4,491	*4,491	*4,082	*4,082	*3,719	3,629	*3,402	2,903		
15 ft.																						
4.6 m																						
10 ft.			*17,300	*17,300	*23,300	*23,300	*18,000	*18,000	*14,700	*14,700	*12,500	*12,500	*10,800	10,800	*9,600	8,800	*8,600	7,200	*7,800	5,800	*6,000	4,700
3.0 m			*7,847	*7,847	*10,569	*10,569	*8,165	*8,165	*6,668	*6,668	*5,670	*5,670	*4,899	4,899	*4,354	3,992	*3,901	3,266	*3,538	2,631	*2,722	2,132
5 ft.			*8,500	*8,500	*23,400	*23,400	*19,300	*19,300	*15,600	15,400	*13,100	12,300	*11,300	10,000	*9,900	8,200	*8,800	6,700	*7,900	5,500	*6,300	4,500
1.5 m			*3,856	*3,856	*10,614	*10,614	*8,754	*8,754	*7,076	6,985	*5,942	5,579	*5,126	4,536	*4,491	3,719	*3,992	3,039	*3,583	2,495	*2,858	2,041
0 ft.	*3,300	*3,300	*7,500	*7,500	*16,000	*16,000	*20,200	17,700	*16,300	14,000	*13,600	11,300	*11,600	9,200	*10,100	7,600	*8,900	6,300	*7,900	5,200	*6,200	4,300
0 m	*1,497	*1,497	*3,402	*3,402	*7,257	*7,257	*9,163	8,029	*7,394	6,350	*6,169	5,126	*5,262	4,173	*4,581	3,447	*4,037	2,858	*3,583	2,359	*2,812	1,950
-5 ft.	*5,200	*5,200	*8,300	*8,300	*14,500	*14,500	*20,600	16,300	*16,600	12,900	*13,800	10,400	*11,800	8,600	*10,200	7,100	*9,000	6,000	*7,900	5,000		
-1.5 m	*2,359	*2,359	*3,765	*3,765	*6,577	*6,577	*9,344	7,394	*7,530	5,851	*6,260	4,717	*5,352	3,901	*4,627	3,220	*4,082	2,722	*3,583	2,268		
-10 ft.	*7,000	*7,000	*9,700	*9,700	*14,900	*14,900	*20,500	15,500	*16,700	12,100	*13,900	9,800	*11,800	8,100	*10,200	6,800	*8,900	5,700	*7,800	4,800		
-3.0 m	*3,175	*3,175	*4,400	*4,400	*6,758	*6,758	*9,299	7,031	*7,575	5,488	*6,305	4,445	*5,352	3,674	*4,627	3,084	*4,037	2,585	*3,538	2,177		
-15 ft.	*8,800	*8,800	*11,400	*11,400	*16,200	*16,200	*19,900	15,000	*16,300	11,700	*13,700	9,400	*11,600	7,800	*10,000	6,500	*8,700	5,500	*7,400	4,700		
-4.6 m	*3,992	*3,992	*5,171	*5,171	*7,348	*7,348	*9,026	6,804	*7,394	5,307	*6,214	4,264	*5,262	3,538	*4,536	2,948	*3,946	2,495	*3,357	2,132		
-20 ft.	*10,800	*10,800	*13,400	*13,400	*18,200	*18,200	*18,900	14,900	*15,600	11,500	*13,200	9,200	*11,200	7,600	*9,600	6,400	*8,200	5,400				
-6.1 m	*4,899	*4,899	*6,078	*6,078	*8,255	*8,255	*8,573	6,758	*7,076	5,216	*5,987	4,173	*5,080	3,447	*4,354	2,903	*3,719	2,449				
-25 ft.	*12,900	*12,900	*15,700	*15,700	*20,700	*20,700	*17,400	15,100	*14,500	11,600	*12,300	9,200	*10,400	7,600	*8,800	6,400	*7,300	5,500				
-7.6 m	*5,851	*5,851	*7,121	*7,121	*9,389	*9,389	*7,892	6,849	*6,577	5,262	*5,579	4,173	*4,717	3,447	*3,992	2,903	*3,311	2,495				
-30 ft.	*15,100	*15,100	*18,300	*18,300	*18,200	*18,200	*15,300	*15,300	*13,000	11,800	*11,000	9,400	*9,200	7,800	*7,600	6,600						
-9.1 m	*6,849	*6,849	*8,301	*8,301	*8,255	*8,255	*6,940	*6,940	*5,897	5,352	*4,989	4,264	*4,173	3,538	*3,447	2,994						
-35 ft.			*17,000	*17,000	*14,700	*14,700	*12,600	*12,600	*10,700	*10,700	*9,000	*9,000	*7,300	*7,300								
-10.7 m			*7,711	*7,711	*6,668	*6,668	*5,715	*5,715	*4,853	*4,853	*4,082	*4,082	*3,311	*3,311								
-40 ft.							*9,000	*9,000	*7,600	*7,600	*6,100	*6,100										
-12.2 m							*4,082	*4,082	*3,447	*3,447	*2,767	*2,767										

*Asterisk indicates load is limited by hydraulic capacity rather than tipping. Ratings are based on ISO standard No. 10567. Rated load capacity does not exceed 87% of hydraulic lift capacity or 75% of tipping load. Total weight of bucket and/or installed attachments must be deducted from the capacities shown above. Lift capacity chart is based on machine located on a solid, level and uniform surface. Load ratings are at the arm bucket pin location, use of any attachment point is a different location to handle objects could affect excavator lift performance.

Super long front

Notes

- The details in this specification brochure are based on Dash 11 models as indicated. Some attachments may be installed on prior models but specifications may vary. Contact Young Corporation for details.
- Variations to the specifications in this brochure can be designed and produced in accordance with customer requirements by contacting Young Corporation with details.
- Super long front attachments are designed for "light duty" work only. Excavating work or heavy hoisting may result in side loads and other activities that will damage the machine.
- Disassembly may be required due to transport restrictions.
- Illustrations may include optional equipment.
- Operating weights include the super long front counterweight identified in the lift chart configuration notes.





Product designs, specifications and/or data in this document are provided for information purposes only and are not warranties of any kind. Product designs and/or specifications may be changed at any time without notice. The only warranties that apply to sales of products and services are Komatsu's standard written warranties, which will be furnished upon request.

Komatsu and other trademarks and service marks used herein are the property of Komatsu Ltd. or its subsidiaries, or the respective owners or licensees.

KOMATSU

[komatsu.com](https://www.komatsu.com)

